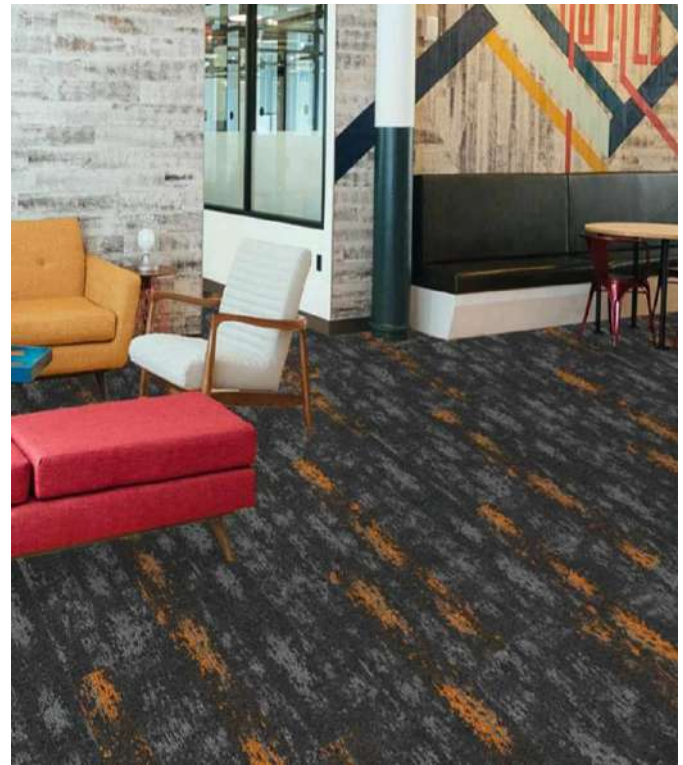


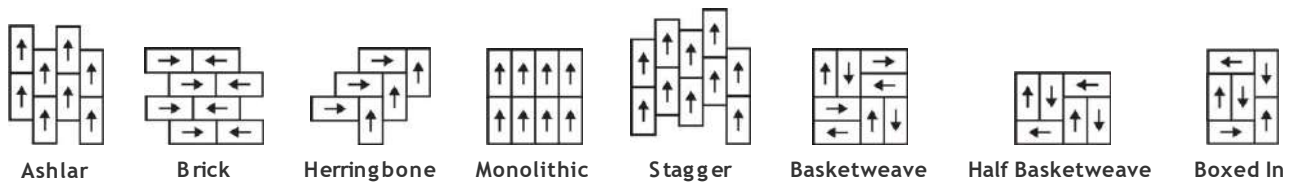
# Magnifyde Floorings

## Modular Plank

Product Type	Carpet Plank	
Collection	Quattro	
Style Number	809	
Construction	Multi-Level Pattern Loop	
Fibre	Olefin PP	
Dye Method	Solution Dyed	
Primary Backing	Synthetic	
Secondary Backing	PVC+ Glass Fibre	
Protective Treatments	Soil Protection	
	u.s.	metric
Product Size	9.8 in x 39.3 in	25 cm x 100 cm
Area Per Box	54 ft <sup>2</sup>	5.0 m <sup>2</sup>
Pieces Per Box	20 pcs	
Gauge	1/12 in	47.2 per 10 cm
Stitches	8.0 per in	32.5 per 10 cm
Average Density	6581 oz/yd <sup>3</sup>	0.243 g/cm <sup>3</sup>
Kilotex		9.16
Total Thickness	0.220 in	5.59 mm
Tufted Weight	22 oz/yd <sup>2</sup>	770.4 g/m <sup>2</sup>



### Recommended Installation Method



### Data + Testing

Radiant Panel (Astm BS 4790-1987)	Class I
Nbs Smoke	Less Than 0.5 mg/m <sup>2</sup>
Electrostatic Propensity Cri Green	Less Than 3.5 kv
Label Plus (Glp) Pill Test	GLP100263
Ada Compliance	Pass*
	>0.6, Meets the recommended static coefficient of friction for ADA walking surfaces and accessible routes*

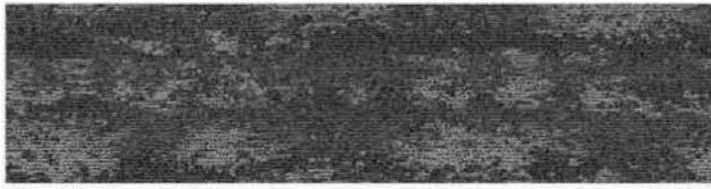
Test Reports may be included or listed by the manufacturing/inventory style number as opposed to the noted selling style number.

### Warranties

5 Year Commercial Limited

# Magnifyde Floorings

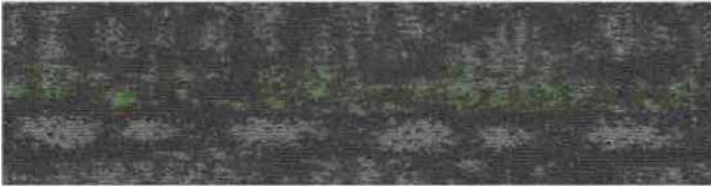
Available Colorways



QT 805



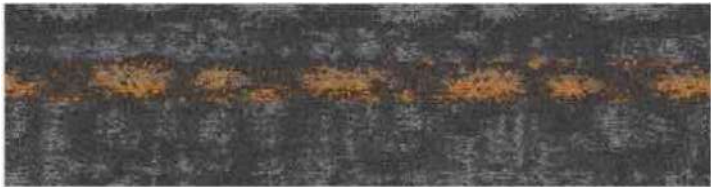
QT 809



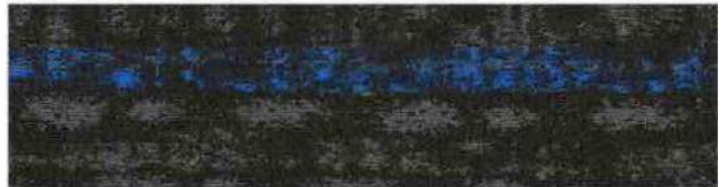
QT 819



QT 825



QT 815



QT 829



## Additional Information

To learn more about the products rendering images and our Environmental Guarantee, please visit [magnifydefloorings.com](https://magnifydefloorings.com)  
 Stock available at India Warehouse - Pune, Bangalore, and Gurgaon

Specifications are subject to nominal manufacturing variance. Material supply and manufacturing processes may necessitate changes without notice.

This product is an exclusive design and may not be duplicated in any manner.

Visit [magnifydefloorings.com](https://magnifydefloorings.com) for more information.

## Features & Certifications

